

Foreword
This is a simplified version of the installation manual.
The manual describes this product in detail is available on the Mitutoyo's website: http://www.mitutoyo.co.jp/english/

Conventions Used in This Manual
Indicates a potentially hazardous situation which, if not avoided, may result in minor injury.

NOTICE
Indicates a potentially hazardous situation which, if not avoided, may result in property damage.

Safety Precautions
Observe the following descriptions to make full use of the performance of this product.
Read this User's Manual thoroughly before operating this product.

Electromagnetic Compatibility (EMC)
This product complies with the EMC Directive. Note that in environments where electromagnetic interference exceeds EMC requirements, in certain, appropriate countermeasures are required to ensure product performance.

Export Control Compliance
This product falls into the catch-all controlled goods and technologies (including programs) according to 'Export Control List of Foreign Exchange and Foreign Trade Act of Japan'.

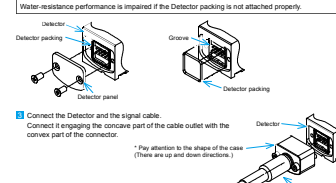
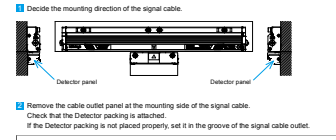
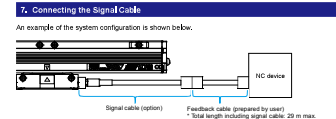
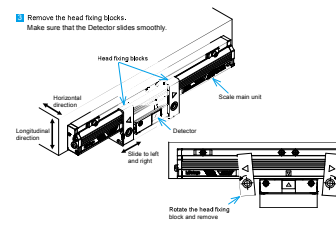
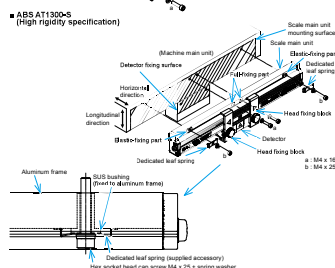
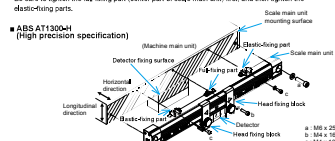
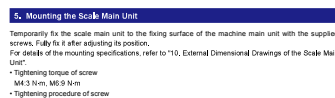
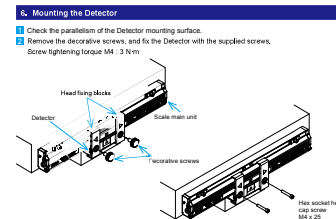
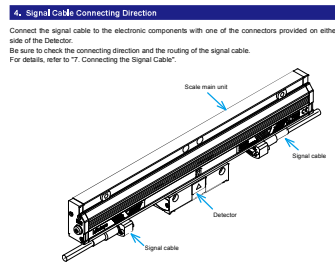
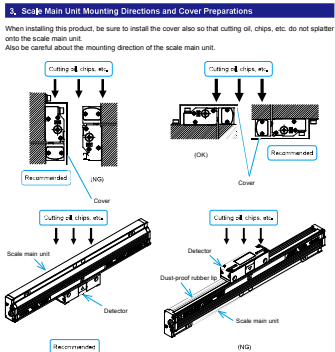
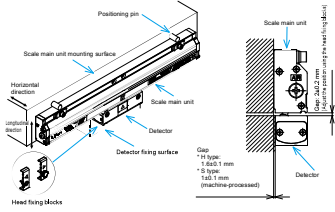
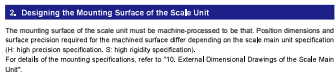
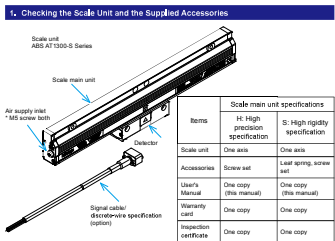
Notes on Export to EU Member Countries
When you intend to export this product to any of the EU member countries, you may be required to provide users' Manuals in English and EU Declaration of Conformity in English under certain circumstances.

Disposal of Old Electrical & Electronic Equipment (applicable in the European Union and other European countries with separate collection systems)
This symbol on the product or on its packaging is based on the WEEE Directive (Directive on Waste Electrical and Electronic Equipment), which is a regulation in EU member countries, and indicates that this product shall not be treated as household waste.

China RoHS Compliance Information
This product meets China RoHS requirements. See the table below.

Table with columns: Component Name, RoHS, REACH, etc. and rows for various parts of the scale.

Warranty
In the event that this product should prove defective in workmanship or material, within one year from the date of original purchase for use, it will be repaired or replaced, at Mitutoyo's option, free of charge up to its original value at Mitutoyo's, without prejudice to the provisions of the Mitutoyo Software End User License Agreement.



8. Specifications

Table with columns: Item, High precision specification, High rigidity specification. Rows include scale main unit installation, effective measurement length, detection method, resolution, etc.

Table for Discretized specification cable with columns: Cable color, Signal, Cable color, Signal.

Air Input
As a method to improve environmental resistance (coolant resistance, dust resistance), supply clean compressed air into the scale main unit.

Air specification
Items: Maximum particle diameter (µm), Lowest pressure dew point (°C), Oil concentration (mg/m3).

Air flow
Supply air of 10 L/min~20 L/min per scale unit.

Using Mitutoyo's head displacement (D) set 9)
Make adjustment with the air pressure, so that the air flow becomes 10 L/min~20 L/min per scale unit.

Using other head displacements
Make adjustment with the air pressure, so that the air flow becomes 10 L/min~20 L/min per scale unit.

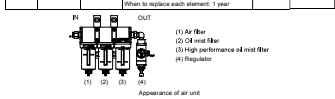
Using flow rate equivalent values
Make adjustment with the air pressure, so that the air flow becomes 10 L/min~20 L/min per scale unit.

Air Supply Unit
The specifications for recommended air devices and the manufacturer models are described in the following.

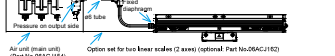
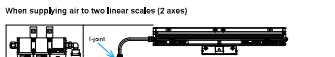


9. Connection Method

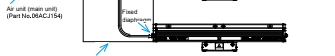
Table with columns: No., Component, Appearance, Specifications, Part No. (Mitutoyo), Manufacturer. Rows include air filter, oil mist filter, high performance oil mist filter, regulator, head displacement.



Connection Method
Do not directly supply air from the compressor to the air unit. Make sure to use dry compressed air through the air dryer or main line air filter.



When supplying air to two linear scales (2 axes)
When supplying air to three linear scales (3 axes)



NOTICE
Make sure to use dry clean air. Estimated time of element replacement for each filter is one year.

9. Signal Check Program

Signal check program (optional) investigates the cause of the error in the scale is separately set.

Table for Signal Check Program with columns: Set No., Applicable models, Signal Check Program (ICD-ROM), Signal Check Program manual, etc.

10. External Dimensional Drawings of the Scale Main Unit

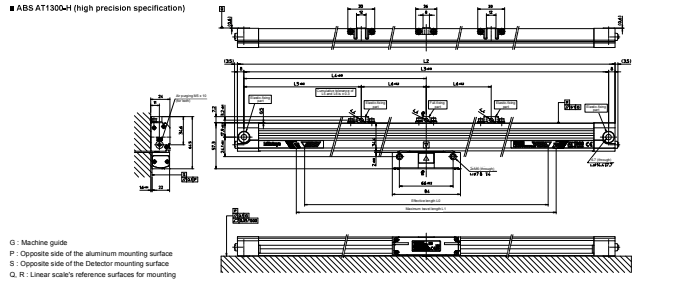


Table with columns: Effective length, Maximum level distance, Full length, Mounting pitch, etc. for high precision specification.

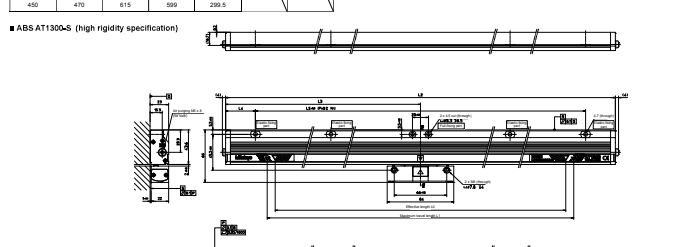


Table with columns: Effective length, Maximum level distance, Full length, Mounting pitch, etc. for high rigidity specification.