

## SPECIFICATIONS

### Metric

Resolution (switchable)	Range	Order No.	Accuracy	Measuring force	Mass	Remarks
0.001mm/0.01mm	25mm	<b>543-551</b>	0.003mm	1.8N or less	240g	With 100V AC adaptor
		<b>543-551A</b>	0.003mm	1.8N or less	240g	With 120V AC adaptor
		<b>543-551D</b>	0.003mm	1.8N or less	240g	With 230V AC adaptor (Germany)
		<b>543-551E</b>	0.003mm	1.8N or less	240g	With 230V AC adaptor (UK)
		<b>543-551DC</b>	0.003mm	1.8N or less	240g	With 230V AC adaptor (China)
	50mm	<b>543-553*</b>	0.006mm	2.3N or less	330g	With 100V AC adaptor
		<b>543-553A*</b>	0.006mm	2.3N or less	330g	With 120V AC adaptor
		<b>543-553D*</b>	0.006mm	2.3N or less	330g	With 230V AC adaptor (Germany)
		<b>543-553E*</b>	0.006mm	2.3N or less	330g	With 230V AC adaptor (UK)
		<b>543-553DC*</b>	0.006mm	2.3N or less	330g	With 230V AC adaptor (China)

\*A 50mm range type IDF (543-557/A/D/E/DC) is available with a measuring accuracy equal to that of the 25mm range type.

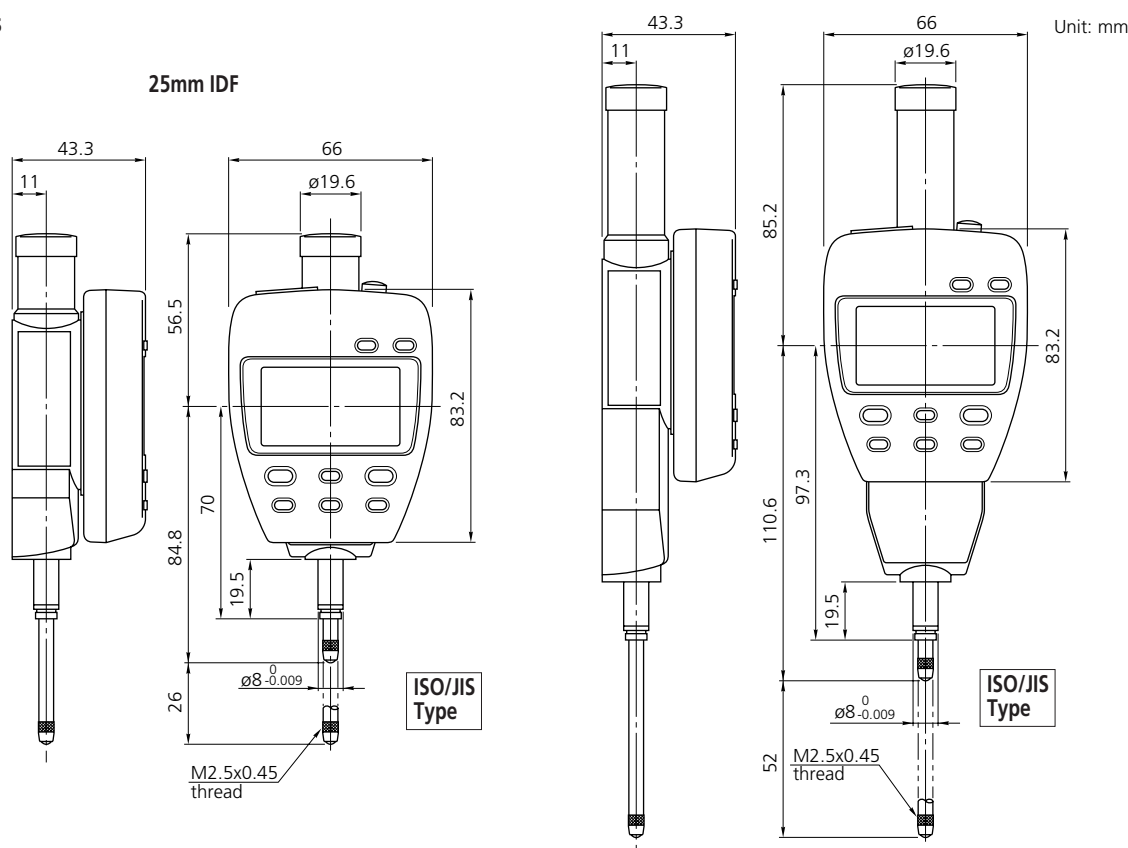
### Inch/Metric

Resolution (switchable)	Range	Order No.	Accuracy	Measuring force	Mass	Remarks
.00005"/.0001"/ .0005"/.001"/ 0.001mm/0.01mm	1" (25.4mm)	<b>543-552</b>	.00012"	1.8N or less	.53 lbs.	With 100V AC adaptor
		<b>543-552A</b>	.00012"	1.8N or less	.53 lbs.	With 120V AC adaptor
		<b>543-552D</b>	.00012"	1.8N or less	.53 lbs.	With 230V AC adaptor (Germany)
		<b>543-552E</b>	.00012"	1.8N or less	.53 lbs.	With 230V AC adaptor (UK)
		<b>543-552DC</b>	.00012"	1.8N or less	.53 lbs.	With 230V AC adaptor (China)
	2" (50.8mm)	<b>543-554*</b>	.00024"	2.3N or less	.73 lbs.	With 100V AC adaptor
		<b>543-554A*</b>	.00024"	2.3N or less	.73 lbs.	With 120V AC adaptor
		<b>543-554D*</b>	.00024"	2.3N or less	.73 lbs.	With 230V AC adaptor (Germany)
		<b>543-554E*</b>	.00024"	2.3N or less	.73 lbs.	With 230V AC adaptor (UK)
		<b>543-554DC*</b>	.00024"	2.3N or less	.73 lbs.	With 230V AC adaptor (China)

\*A 2" (50.8mm) range type IDF (543-558/A/D/E/DC) is available with a measuring accuracy equal to that of the 1" (25.4mm) range type.

### 50mm IDF

### Dimensions



Note: Dimensions of the ANSI/AGD (inch/metric) type IDF indicator partly differ from those of the ISO/JIS (metric) type IDF.

