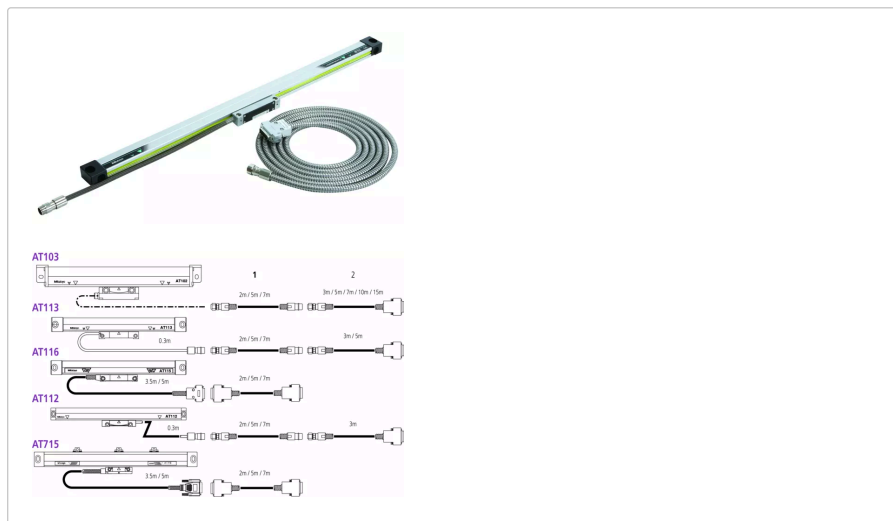




Linear Scale AT113

Item number: 539-217-30

Images



Description

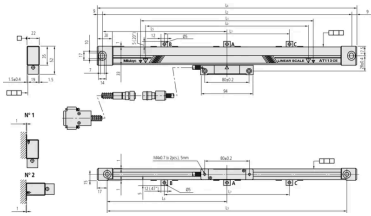
These linear scales are built for limited installation space

- Glass scale - Zero not coded
- Expansion factor $(8 \pm 1) \times 10^{-6}/K^{-1}$
- An armoured inox signal cable is used to connect the DRO counter

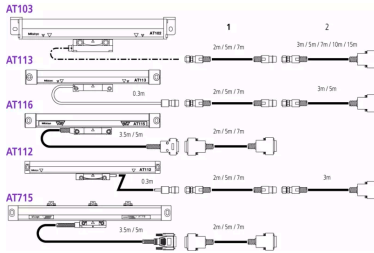
Specification

Model:	AT113-1000
Accuracy:	Standard type (5+5L/1000) μm L = Effective range (mm)
Mass:	1.9 kg

Dimensions



- L⁰:** 1000 mm
- L¹:** 1040 mm
- L²:** 1178 mm
- L³:** 1162 mm
- L⁴:** 1196 mm
- L⁵:** 589 mm
- L⁶:** 581 mm



- L⁰:** 1000 mm
- L¹:** 1040 mm
- L²:** 1178 mm
- L³:** 1162 mm
- L⁴:** 1196 mm
- L⁵:** 589 mm
- L⁶:** 581 mm

Accessories

Optional accessories:



Extension Cable 2M

Art No. 09AAA033A
 £230.00 ex. VAT

Extension Cable 5M

Art No. 09AAA033B
 £323.00 ex. VAT



Extension Cable 7M

Art No. 09AAA033C
£381.00 ex. VAT



Linear Scale Counter KA-212

Art No. 174-183D
£464.00 ex. VAT



Linear Scale Counter KA-213

Art No. 174-185D
£567.00 ex. VAT