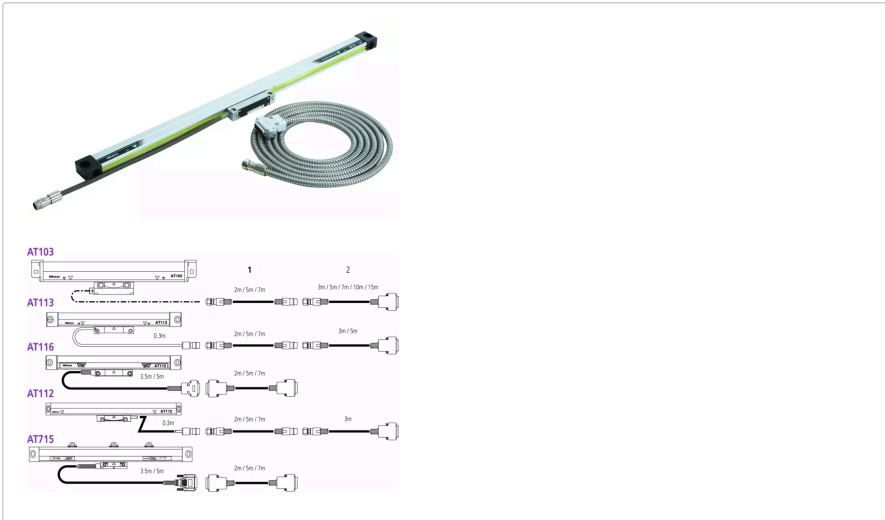




## Linear Scale AT113

Item number: 539-214-30

### Images



### Description

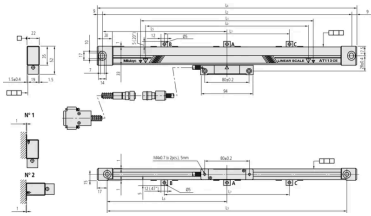
These linear scales are built for limited installation space

- Glass scale - Zero not coded
- Expansion factor  $(8 \pm 1) \times 10^{-6}/K^{-1}$
- An armoured inox signal cable is used to connect the DRO counter

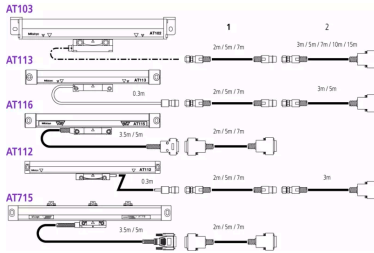
### Specification

<b>Model:</b>	AT113-750
<b>Accuracy:</b>	Standard type (5+5L/1000) $\mu\text{m}$ L = Effective range (mm)
<b>Mass:</b>	1.4 kg

### Dimensions



- L<sup>0</sup>: 750 mm
- L<sup>1</sup>: 780 mm
- L<sup>2</sup>: 918 mm
- L<sup>3</sup>: 902 mm
- L<sup>4</sup>: 936 mm
- L<sup>5</sup>: 459 mm
- L<sup>6</sup>: 451 mm



- L<sup>0</sup>: 750 mm
- L<sup>1</sup>: 780 mm
- L<sup>2</sup>: 918 mm
- L<sup>3</sup>: 902 mm
- L<sup>4</sup>: 936 mm
- L<sup>5</sup>: 459 mm
- L<sup>6</sup>: 451 mm

**Accessories**

**Optional accessories:**



**Extension Cable 2M**

Art No. 09AAA033A  
 £230.00 ex. VAT

**Extension Cable 5M**

Art No. 09AAA033B  
 £323.00 ex. VAT



### Extension Cable 7M

Art No. 09AAA033C  
£381.00 ex. VAT



### Linear Scale Counter KA-212

Art No. 174-183D  
£464.00 ex. VAT



### Linear Scale Counter KA-213

Art No. 174-185D  
£567.00 ex. VAT

