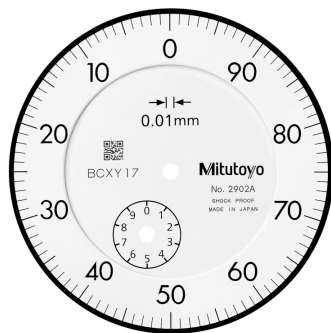
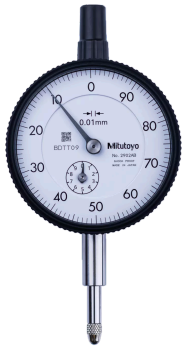




Dial Gauge, Lug Back, ISO Type

Item number: 2902A

Images



Description

Standard Type, 10 mm Range, 0,01 mm Graduation

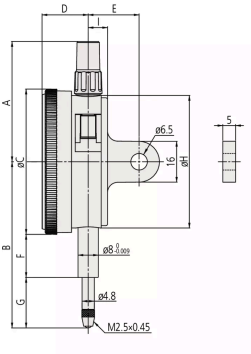
This is a standard dial indicator. It offers you the following benefits:

- Bezel clamp and lifting lever (optional) can be attached to either right or left side. They can be easily installed and removed without tools.
- No through screw holes on the frame as well as the use of an O-ring prevents water or oil penetration.

Specification

Digital/Analog:	Analog
Inch-Metric:	Metric
Type:	EN ISO Standard
Delivered:	With certificate of inspection
Range:	10 mm
Range per rev.:	1 mm
Dial reading:	100.0-0.0
Graduation:	0.01 mm
MPE any 1/10 revolution:	5 µm
MPE any 1/2 revolution:	9 µm
MPE any 1 revolution:	10 µm
MPE measuring range:	13 µm
H MPE (Hysteresis):	3 µm
R MPE (Repeatability):	3.0 µm
Measuring force:	0,4-1,4 N
Mass:	144 g
Stem:	8.0 mm
Contact point:	Carbide tipped, thread: M 2.5 x 0.45 mm
Continuous dial:	Yes
Reverse reading:	Yes 3

Dimensions



A: 47,2 mm

B: 65.2 mm

C: 57 mm

D: 18.1 mm

E: 20 mm

F: 16.9 mm

G: 19.8 mm

H: 52 mm

I: 7.6 mm

Accessories

Optional accessories:



Limit Hands (green) 2pcs

Dial Indicator Series 2/3/4
Art No. 21AZB195



Bezel Clamp for Dial Gauge

Metric, Series 2/3/4
Art No. 21AZB148



Spindle Lifting Lever

for Digital Indicator, A-Type Dial Indicator
Serie 2/3/4
Art No. 21EZA198
£7.70 ex. VAT



Spindle Lifting Cable

for Indicator, L=500mm
Art No. 21JZA295



Spindle Lifting Cable with Auto Stop

for Indicator, L=300mm
Art No. 21JZA301

Spare parts**Consumable spares:****Contact Element Ball Point,
M2,5x0,45**

7,3mm Length, Carbide, Metric

Art No. 901312

£7.70 ex. VAT