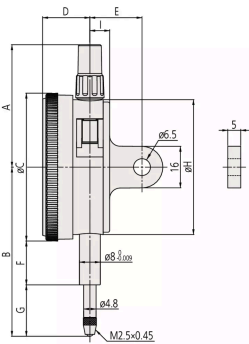




## Dial Gauge, Lug Back, ISO Type

Item number: 2900A-70

**Images**



Description

Graduation 0,001 mm

- This is a one revolution dial indicator. It offers you the following benefits:
- Bezel clamp and lifting lever (optional) can be attached to either right or left side.
  - No through screw holes on the frame as well as the use of an O-ring prevents water or oil penetration.
  - It eliminates the possibility of reading errors due to miscounting multiple revolutions.

Specification

Digital/Analog:	Analog
Inch-Metric:	Metric
Type:	EN ISO Standard
Delivered:	With certificate of inspection
Range:	0.08 mm
Plunger Stroke:	4 mm
Range per rev.:	0,1 mm
Dial reading:	40.0-0.0-40.0
Graduation:	0.001 mm
MPE any 1/10 revolution:	2 µm
MPE measuring range:	3 µm
H MPE (Hysteresis):	2 µm
R MPE (Repeatability):	1.0 µm
Measuring force:	0,4-2 N
Mass:	150 g
Stem:	8.0 mm
Contact point:	Carbide tipped, thread: M 2.5 x 0.45 mm
One revolution:	Yes
Shockproof:	Yes

Accessories

Optional accessories:



### Limit Hands (green) 2pcs

Dial Indicator Series 2/3/4  
Art No. 21AZB195



### Bezel Clamp for Dial Gauge

Metric, Series 2/3/4  
Art No. 21AZB148



### Spindle Lifting Lever

for Digital Indicator, A-Type Dial Indicator  
Serie 2/3/4  
Art No. 21EZA198  
£7.70 ex. VAT

## Spare parts

### Consumable spares:



### Contact Element Ball Point, M2,5x0,45

7,3mm Length, Carbide, Metric  
Art No. 901312  
£7.70 ex. VAT



### **NBR Rubber Boot**

Digital Gauge ID-B, Dial Gauge IP63/IP64  
Art No. 21AAB562