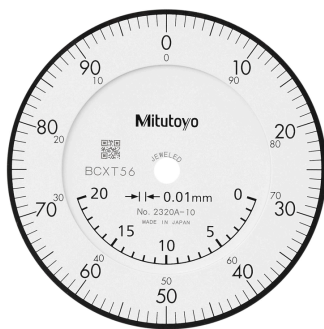




Dial Gauge, Lug Back, ISO Type

Item number: 2320A-10

Images



Description

Standard Type, 20 mm Range, 0,01 mm Graduation

This is a standard dial indicator. It offers you the following benefits:

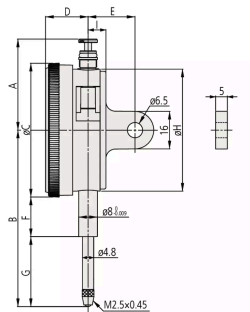
- Bezel clamp and lifting lever (optional) can be attached to either right or left side. They can be easily installed and removed without tools.

- No through screw holes on the frame and secure adhesion between the bezel and the crystal as well as the use of an O-ring prevents water or oil penetration.

Specification

Digital/Analog:	Analog
Inch-Metric:	Metric
Type:	EN ISO Standard
Delivered:	With certificate of inspection
Range:	20 mm
Range per rev.:	1 mm
Dial reading:	±0.0-100.0
Graduation:	0.01 mm
MPE any 1/10 revolution:	6 µm
MPE any 1/2 revolution:	10 µm
MPE any 1 revolution:	11 µm
MPE measuring range:	20 µm
H MPE (Hysteresis):	4 µm
R MPE (Repeatability):	3.0 µm
Measuring force:	0,4-2 N
Mass:	150 g
Stem:	8.0 mm
Contact point:	Carbide tipped, thread: M 2.5 x 0.45 mm
Continuous dial:	Yes
Coaxial revolution counter:	Yes
Cushioned end point:	Yes

Dimensions

**A:** 38.5 mm**B:** 75.2 mm**C:** 57 mm**D:** 18.1 mm**E:** 20 mm**F:** 16.9 mm**G:** 29.8 mm**H:** 52 mm**I:** 7.6 mm

Accessories

Optional accessories:



Limit Hands (green) 2pcs

Dial Indicator Series 2/3/4
Art No. 21AZB195



Bezel Clamp for Dial Gauge

Metric, Series 2/3/4
Art No. 21AZB148



Spindle Lifting Lever

for S and A-Type Serie 2,3 >10/0,4" up to
20mm/0,8"
Art No. 21AZB150
£4.40 ex. VAT

Spare parts**Consumable spares:****Contact Element Ball Point,
M2,5x0,45**

7,3mm Length, Carbide, Metric

Art No. 901312

£7.70 ex. VAT