



Dial Gauge, Lug Back, ISO Type

Item number: 2050A-60

Images



Description

Standard Type, 20 mm Range, 0,01 mm Graduation

This is a standard dial indicator. It offers you the following benefits:

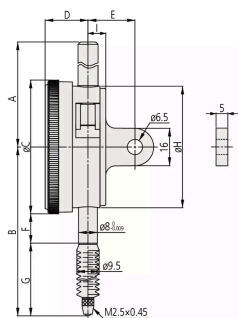
- Bezel clamp and lifting lever (optional) can be attached to either right or left side. They can be easily installed and removed without tools.
- No through screw holes on the frame and secure adhesion between the bezel and the crystal as well as the use of an O-ring prevents water or oil penetration.

Specification

Digital/Analog:	Analog
Inch-Metric:	Metric
Type:	EN ISO Standard
Delivered:	With certificate of inspection
Range:	20 mm

Range per rev.:	1 mm
Dial reading:	±0.0-100.0
Graduation:	0.01 mm
MPE any 1/10 revolution:	6 µm
MPE any 1/2 revolution:	10 µm
MPE any 1 revolution:	11 µm
MPE measuring range:	20 µm
H MPE (Hysteresis):	4 µm
R MPE (Repeatability):	3.0 µm
Measuring force:	0,4-2,5 N
Mass:	155 g
Stem:	8.0 mm
Contact point:	Carbide tipped, thread: M 2.5 x 0.45 mm
Continuous dial:	Yes

Dimensions



A: 58,2 mm
B: 87.2 mm
C: 57 mm
D: 18.1 mm
E: 20 mm
F: 12.3 mm
G: 46.4 mm
H: 52 mm
I: 7.6 mm

Accessories

Optional accessories:



Limit Hands (green) 2pcs

Dial Indicator Series 2/3/4
Art No. 21AZB195



Bezel Clamp for Dial Gauge

Metric, Series 2/3/4
Art No. 21AZB148

Spare parts

Consumable spares:



Contact Element Ball Point, M2,5x0,45

7,3mm Length, Carbide, Metric
Art No. 901312
£7.70 ex. VAT



NBR Rubber Boot

Dial Gauge IP64, 20 mm Range
Art No. 21AAB573

