



## Dial Gauge, Lug Back, ISO Type

Item number: 2044A-09

**Images**



#### Description

**Standard Type, 5 mm Range, 0,01 mm Graduation**

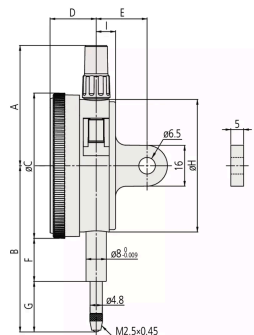
This is a standard dial indicator. It offers you the following benefits:

- Bezel clamp and lifting lever (optional) can be attached to either right or left side. They can be easily installed and removed without tools.
- No through screw holes on the frame and secure adhesion between the bezel and the crystal as well as the use of an O-ring prevents water or oil penetration.

**Specification**

<b>Digital/Analog:</b>	Analog
<b>Inch-Metric:</b>	Metric
<b>Type:</b>	EN ISO Standard
<b>Delivered:</b>	With certificate of inspection
<b>Range:</b>	5 mm
<b>Range per rev.:</b>	1 mm
<b>Dial reading:</b>	±0-100
<b>Graduation:</b>	0.01 mm
<b>MPE any 1/10 revolution:</b>	5 µm
<b>MPE any 1/2 revolution:</b>	9 µm
<b>MPE any 1 revolution:</b>	10 µm
<b>MPE measuring range:</b>	12 µm
<b>H MPE (Hysteresis):</b>	3 µm
<b>R MPE (Repeatability):</b>	3 µm
<b>Measuring force:</b>	0,4-1,4 N
<b>Mass:</b>	147 g
<b>Stem:</b>	8 mm
<b>Contact point:</b>	Carbide tipped, thread: M 2.5 x 0.45 mm
<b>Continuous dial:</b>	Yes
<b>Shockproof:</b>	Yes

**Dimensions**

**A:** 47,2 mm**B:** 65.2 mm**C:** 57 mm**D:** 18.1 mm**E:** 20 mm**F:** 16.9 mm**G:** 19.8 mm**H:** 52 mm**I:** 7.6 mm

## Accessories

### Optional accessories:



### Limit Hands (green) 2pcs

Dial Indicator Series 2/3/4  
Art No. 21AZB195



### Bezel Clamp for Dial Gauge

Metric, Series 2/3/4  
Art No. 21AZB148



### Spindle Lifting Lever

for Digital Indicator, A-Type Dial Indicator  
Serie 2/3/4  
Art No. 21EZA198  
**£7.70** ex. VAT

### Spindle Lifting Cable

for Indicator, L=500mm  
Art No. 21JZA295



### Spindle Lifting Cable with Auto Stop

for Indicator, L=300mm  
Art No. 21JZA301



### Spare parts

#### Consumable spares:



### Contact Element Ball Point, M2,5x0,45

7,3mm Length, Carbide, Metric  
Art No. 901312  
**£7.70** ex. VAT