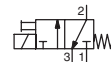




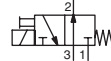
# SOLENOID VALVES

ISO 15218 (CNOMO, size 30) interface  
direct operated, pad mounting body  
instant fittings or G1/8 - G1/4 subbases

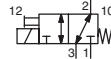
NC



NO



U



**3/2**  
Series  
**192**

## FEATURES

- CNOMO pad-mount version for valve piloting applications
- Compact size and low weight for easy installation on single or joinable subbases
- AC/DC interchangeability of the solenoid operator without any need for disassembly of the valve
- Version with M12 connection with visual indication and peak voltage suppression conforming to "UL" standards
- Flexible installation on joinable subbases
- Manual operator as standard
- The solenoid valves satisfy all relevant EU directives

## GENERAL

**Differential pressure** See "SPECIFICATIONS" [1 bar = 100 kPa]  
**Maximum allowable pressure** 16 bar  
**Response time** 7 ms

fluids (*)	temperature range (TS)	seal materials (*)
air, inert gas	- 10°C à + 60°C	NBR (nitrile) PUR (polyurethane)

## MATERIALS IN CONTACT WITH FLUID

(\*) Ensure that the compatibility of the fluids in contact with the materials is verified

**Body** PAM, glass-filled  
**Core tube** Stainless steel  
**Core and plugnut** Stainless steel  
**Internal parts, springs** Stainless steel  
**Seals** NBR, PUR  
**Shading coil** Copper

## CONSTRUCTION

**Mounting pad** NC ISO 15218 (CNOMO 06-05-80 / NF E49-066, size 30)  
NO - U NF E 49-066

## ELECTRICAL CHARACTERISTICS

**Coil insulation class** F  
**Connector** Spade plug (cable Ø 6-10 mm) or M12  
**Connector specification** ISO 4400 / EN 175301-803, form A  
or CNOMO E03.62.520.N (M12)

**Electrical safety** IEC 335  
**Electrical enclosure protection** Moulded IP67 (EN 60529)  
Moulded IP65, M12 version  
**Standard voltages** DC (=): 24V - 48V (M12: 24 V + LED and protection)  
(Other voltages and 60 Hz on request) AC (~): 24V - 48V - 115V - 230V / 50 Hz

-	power ratings				operator ambient temperature range (TS)	replacement coil		type <sup>(1)</sup>
	inrush ~	holding ~		hot/cold =		~	=	
	(VA)	(VA)	(W)	(W)		(C°)	230 V/50 Hz	
-	9	4	3	3 / 3	-10 to + 60	43005627	43005642	01
						-	43005664	06

<sup>(1)</sup> Refer to the dimensional drawings on the following page.

## SPECIFICATIONS

pipe size	orifice size		flow at 6 bar l/min (ANR)		flow coefficient Kv		operating pressure differential (bar)			power coil (W)		without man. operator	maintained man. operator	impulse man. operator	button man. operator	catalogue number		
																min.	max. (PS)	
	air (*)																	
	1 → 2 (mm)	2 → 3 (mm)	1 → 2 (l/min)	2 → 3 (l/min)	~	=	~/=	~/=	=									
NC - Normally closed (with exhaust to the subbase)																		
pad mounting <sup>(2)</sup>	1,9	2,1	105	105	1,5	1,5	0	16	16	3	3	×	●	▼	■	19201004	19201025	19201139
																19201005	19201026	19201140
																19201006	19201027	19201141
																19201068	19201074	19201155
	2,1	2,3	112	154	1,6	2,2	0	12	12	3	3	×	●	▼	■	19201001	19201022	19201136
																19201002	19201023	19201137
																19201003	19201024	19201138
																19201067	19201073	19201154
NC - Normally closed (with exhaust 1/8 to the front side)																		
pad mounting <sup>(2)</sup>	1,9	2,1	105	105	1,5	1,5	0	16	16	3	3	×	●	▼	■	19201010	19201031	19201145
																19201011	19201032	19201146
																19201012	19201033	19201147
																19201070	19201076	19201157
	2,1	2,3	112	154	1,6	2,2	0	12	12	3	3	×	●	▼	■	19201007	19201028	19201142
																19201008	19201029	19201143
																19201009	19201030	19201144
																19201069	19201075	19201156

All leaflets are available on: [www.asco.com](http://www.asco.com)

## SPECIFICATIONS

pipe size	orifice size		flow at 6 bar		flow coefficient		operating pressure differential (bar)				power coil (W)		without man. operator	man. operator	maintained man. operator	impulse man. operator	button man. operator	catalogue number		
	1 → 2 (mm)	2 → 3 (mm)	1 → 2	2 → 3	1 → 2 (l/min)	2 → 3 (l/min)	min.	max. (PS)		~	=	with connector						without connector	M12 connection	
								air (*)												
								~	=											
NO - Normally open (with exhaust to the subbase)																				
pad mounting <sup>(2)</sup>	2,1	1,9	112	105	1,6	1,5	0	10	10	3	3	×					19201013	19201034	19201148	
													●				19201014	19201035	19201148	
														▼			19201015	19201036	19201150	
															■		19201071	19201077	19201158	
U - Universal (with exhaust to the subbase)																				
pad mounting <sup>(2)</sup>	1,5	1,5	56	63	0,8	0,9	0	10	10	3	3	×					19201019	19201037	19201151	
													●				19201020	19201038	19201152	
														▼			19201021	19201039	19201153	
															■		19201072	19201078	19201159	

## EMBASSES

pipe size	designation	composition	catalogue number
<b>6/6 polyamide subbases</b>			
instant fittings <sup>(3)</sup>	single subbase (instant fittings OD 4 mm)		35300069
	joinable subbase (instant fittings OD 4 mm)		35300070
	set of 2 joinable end subbases, right-hand pressure intake, endpieces with instant fittings OD 6 mm		35300071
	set of 2 joinable end subbases, right-hand and/or left-hand pressure intake, endpieces with instant fittings OD 6 mm		35300072 <sup>(4)</sup>
<b>Zamak subbases</b>			
tapped <sup>(3)</sup>	laterally-connected single subbase		35300047
	laterally-connected joinable subbase		35300048
	laterally-connected single subbase (3 connectable ports lateral bore)		35300049
	laterally-connected joinable subbase (3 connectable ports lateral bore)		35300057

<sup>(2)</sup> Port 3: M5.

<sup>(3)</sup> These subbases can be mounted on omega rail to EN 50022 using 2 clips (clips sold in packs of 10, catalogue number: 33400036).

<sup>(4)</sup> The equipment can be used for two different pressure intakes, supplied with one blanking plug to cover unused port.

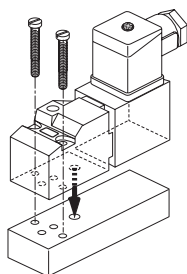
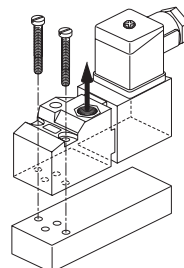
<sup>(5)</sup> 10 bar on request (with 5W/6,9W coil)

## OPTIONS

- Explosionproof enclosures for use in zones 1/21-2/22, categories 2-3 to ATEX Directive 2014/34/EU (see "Explosionproof solenoids" section): Ex mb (PV), catalogue numbers: **PV19201001...1072**
- Straight M12 connector (IP67 protection with connector correctly installed): with 5 m cable: catalogue number **88130212**
- Right-angle M12 connector (IP67 protection with connector correctly installed), with 5 m cable: catalogue number **88130213**
- Catalogue number (without connector) + connector catalogue number (with integrated LED indicator and electrical protection): 24 V (~/-), **88122603** - 48 V (~/-), **88122604** - 115 V (~/-), **88122605** - 230 V (~/-), **88122608**
- M5 flow control regulator to fit port 3, catalogue number: **34600380**
- Plug with visual indication and peak voltage suppression or with cable length of 2 m (see Solenoids, Coils & Accessories section)

## INSTALLATION

- The solenoid valves can be mounted in any position without affecting operation
- Selection of the exhaust port:

to the subbase.  
(Collected in subbase)

to front side (G 1/8) equipped with an exhaust plug.  
(Exhaust to atmosphere)


- Mounting on single or joinable subbases
- ATEX 2014/34/EU versions (option "PV") can be installed on single (all versions) or joinable zinc diecast subbases
- Pipe connections 1/8 have standard thread according to ISO 228/1
- Installation/maintenance instructions are included with each valve
- M12 electrical connection:



3	-
4	+
5	earth

- Installation/maintenance instructions are included with each valve

**ORDERING EXAMPLES:**

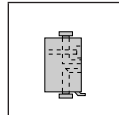
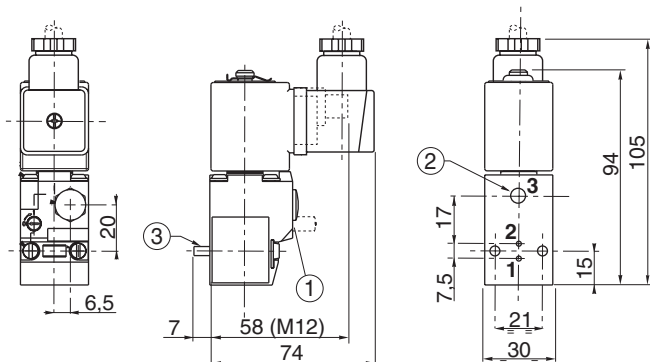
19201001	230V / 50 Hz
19201136	24V / DC
basic number	voltage options

**DIMENSIONS (mm), WEIGHT (kg)**



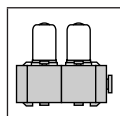
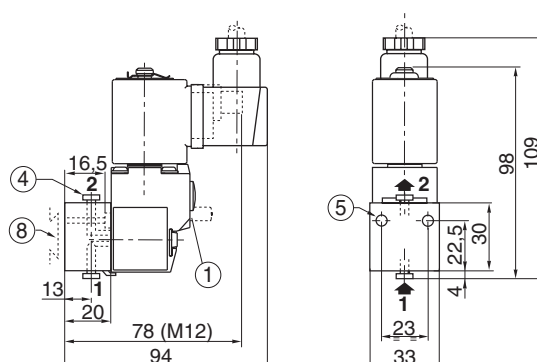
**TYPE 01-06**  
Spade plug / M12  
IEC 335 / IP67 / IP65 (M12)  
EN 175301-803 (11 mm)  
E03.62.520.N, IP65

19000005 to 19000045



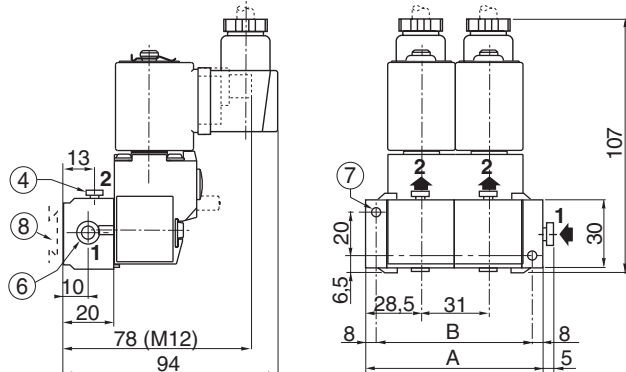
**TYPE 02**  
Single instant fitting subbase  
Polyamide

35300069



**TYPE 03**  
Joinable instant fitting subbase  
Polyamide

35300070 / 35300071 (set of 2)



Right-hand pressure intake option or 2 different pressure intakes by procuring the set of two end subbases with endpieces (catalogue number: 35300072). When mounted on DIN rail, it is recommended to use a securing clip on the end subbases as well as on the central subbase.

type	weight <sup>(1)</sup>
01	0,270
02	0,135
06	0,260

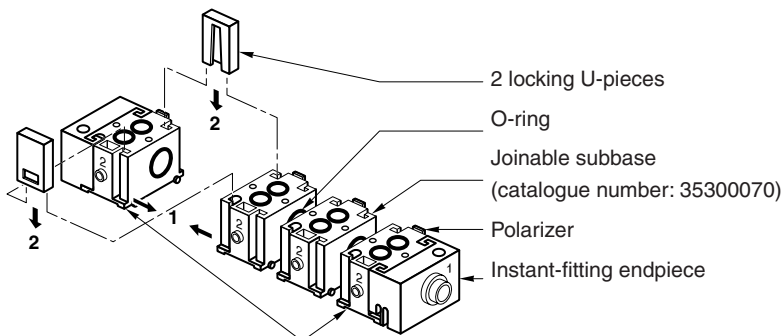
<sup>(1)</sup> including coil and connector. (except M12 connection type 06)

type	weight <sup>(2)</sup>						
	number of subbases						
	2	3	4	5	6	7	8
03+01	0,595	0,88	1,165	1,45	1,735	2,02	2,305

<sup>(2)</sup> Including seals, set screws and joining unit.

number of subbases	type 03	
	A	B
2	88	72
3	119	103
4	150	134
5	181	165
6	212	196
7	243	227
8	274	258

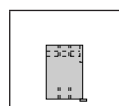
- ① Manual operator location
- ② Port 3: M5, depth 5,5 mm
- ③ Mounting: two CM4x20 screws
- ④ Instant-fitting connection for OD 4 mm tube
- ⑤ Mounting: two dia. 3,5 mm securing holes, dia. 6,5 mm counter-bores, depth 3,5 mm
- ⑥ Instant-fitting connection for OD 6 mm tube
- ⑦ Mounting: two dia. 4,5 mm securing holes
- ⑧ Adaptable clips



Joinable end subbases with instant-fitting endpieces  
(catalogue number: 35300071 )

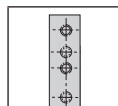
All leaflets are available on: [www.asco.com](http://www.asco.com)

### DIMENSIONS (mm), WEIGHT (kg)



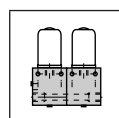
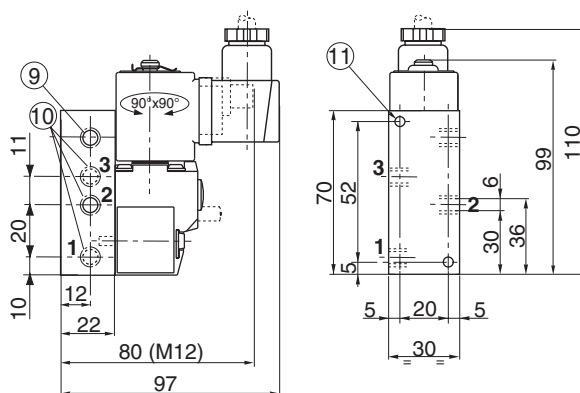
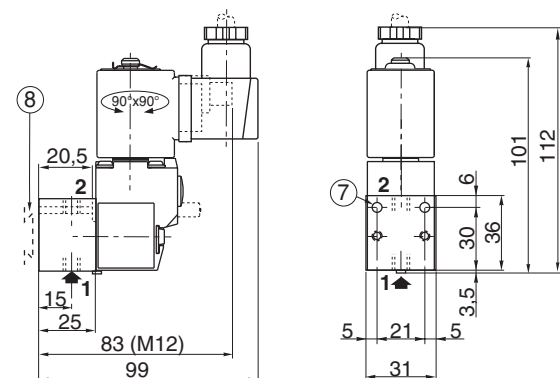
**TYPE 04**  
Single subbase  
1/8 - Zamak  
NC function only  
2 connectable ports

35300047



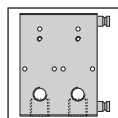
**TYPE 04**  
Single subbase  
1/4 - Zamak  
NC, NO or U function  
3 connectable ports

35300048



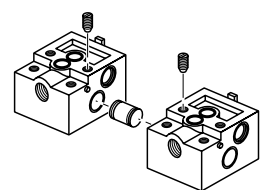
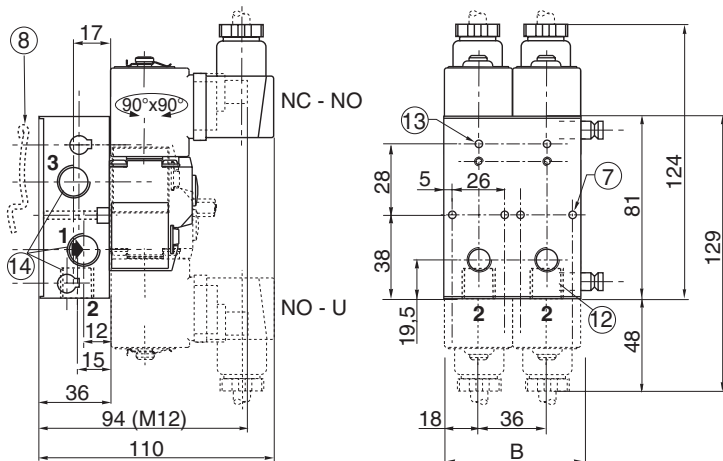
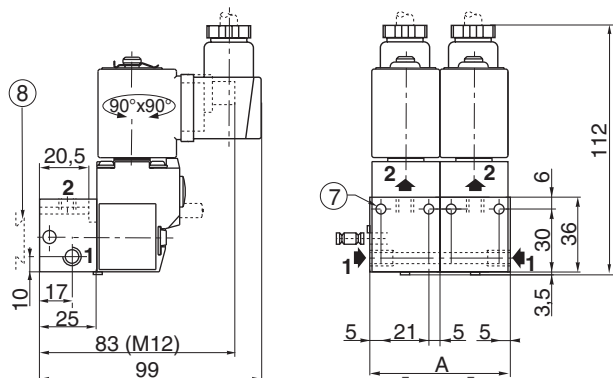
**TYPE 06**  
Joinable subbase  
1/8 - Zamak  
NC function only  
2 connectable ports

35300048



**TYPE 07**  
Joinable subbase  
1/4 - Zamak  
NC, NO or U function  
3 connectable ports

35300057



Joinable subbases assembled with adapter locked by sunk set screws.  
For DIN rail mounting: see type 03.

- ⑦ Mounting: two dia. 4,5 mm securing holes
- ⑧ Adaptable clips
- ⑨ Non-used port
- ⑩ Port 3: NC (exhaust) / NO (Inlet pressure)  
Port 2: NC - NO (Outlet pressure)  
Port 1: NC (Inlet pressure) / NO (exhaust)  
U: Pressure entry through any port
- ⑪ Mounting: two dia. 4,5 mm securing holes, dia. 8 mm counter-bores, depth 6 mm
- ⑫ Port 2: Accessible by removing cap
- ⑬ Mounting: two dia. 4,5 mm securing holes, dia. 7,5 mm counter-bores, depth 6 mm
- ⑭ NC-NO-U: Port 3 (exhaust) / Port 2 (Outlet pressure)  
Port 1 (Inlet pressure))

type	weight <sup>(2)</sup>						
	number of subbases						
	2	3	4	5	6	7	8
06+01	0,74	1,10	1,48	1,85	2,22	2,59	2,96
07+01	0,88	1,32	1,76	2,2	2,64	3,08	3,52

<sup>(2)</sup> Including seals, set screws and joining unit.

number of subbases	type 06	type 07
	A	B
2	62	72
3	93	108
4	124	144
5	155	180
6	186	216
7	217	252
8	248	288

type	weight <sup>(1)</sup>
04	0,185
05	0,240
04 + 01	0,455
05 + 01	0,510

<sup>(1)</sup> including coil and connector.



# SCATTERGOOD & JOHNSON LTD

ELECTRICAL ENGINEERING & FLUID CONTROL DISTRIBUTORS

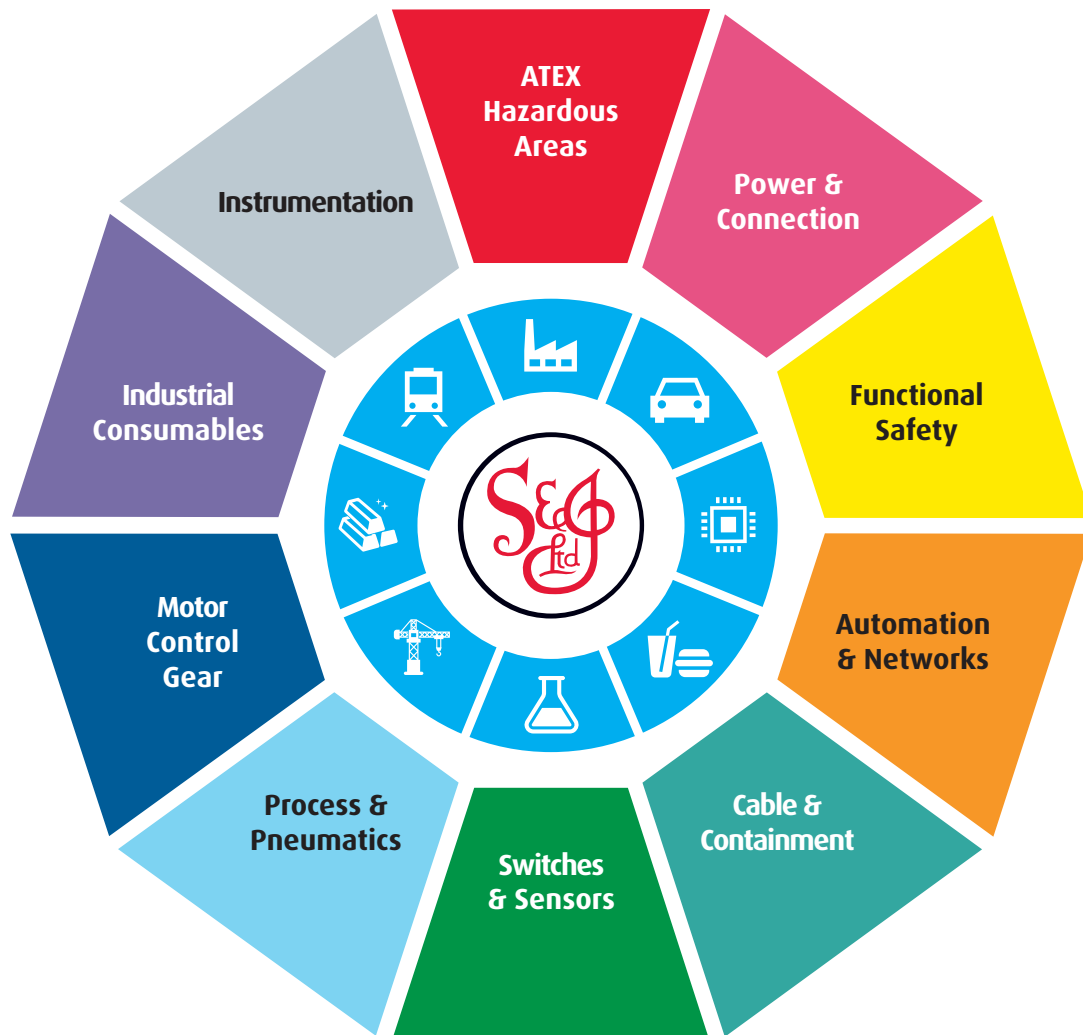
At Scattergood & Johnson Ltd, we pride ourselves on being a technical distributor to specialist industries.

Working with a range of quality product suppliers across a number of specialist markets, we are not your average 'box shifter' - we are your technical and supply chain partner.

We fully support every product we sell - for free! Our internal team and external sales engineers can answer any product or application question, no matter the complexity.

Backing up this technical ability is a range of 50,000+ products available from stock for nationwide next day delivery (same day if required!), or you can collect what you need from any of our trade counters around the UK.

Select your specialist interest below to learn more about how we can help.



Online, In Branch and On the Road - Scattergood & Johnson Ltd, there when you need us.

# [www.scatts.co.uk](http://www.scatts.co.uk)