

Dial Indicators

SERIES 2 – 0.01 mm Graduation Dial Indicators

- Standard 0.01 mm graduation dial gauges have a bezel with an outside diameter of 57 mm.
- The bezel clamp and lifting lever (optional) can be attached to either the right or left side. These parts can be easily installed and removed without tools.
- Watertight assembly of bezel and crystal as well as the use of an O-ring prevents water or oil penetration.
- The stem and spindle are made of high-strength quench-hardened stainless steel suitable for heavy-duty use.
- The grand gear is made of stainless steel with high resistance to wear and deformation.
- Application of an anti-reflective and hard surface coating improves scale visibility along with scratch and chemical resistance.
- A carbide contact point is used.



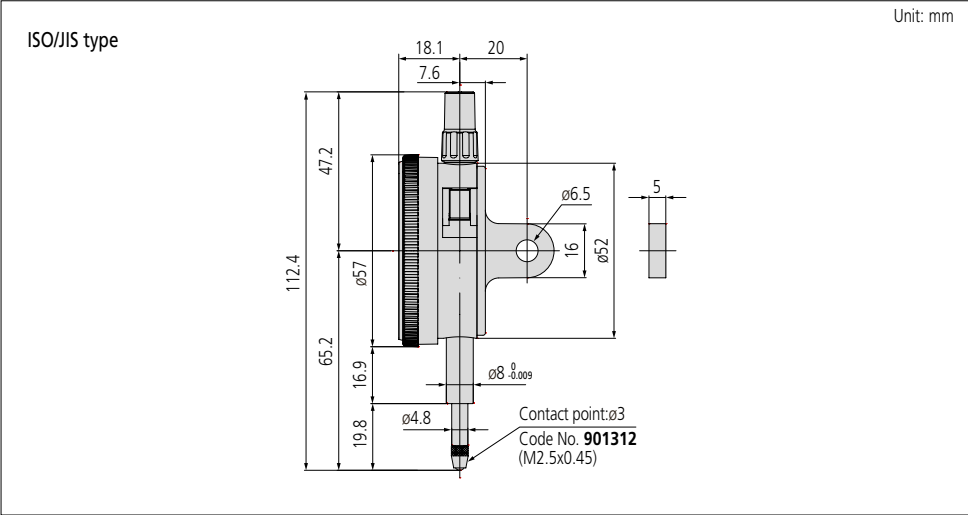
2046A

Specifications

Metric										
Code No.	Range (range/rev)	Max. permissible error					Scale	Measuring force		
		Indication error				Hysteresis				Repeat- ability
		1/10 rev	1/2 rev	1 rev	Overall					
Graduation: 0.01 mm										
2046A	10 mm (1 mm)	5 μm	9 μm	10 μm	13 μm	3 μm	3 μm	±0-100	1.4 N or less	
2046A-09					15 μm					
2047A					13 μm			0-50-0		
2902A					15 μm			100-0		
2310A-10					12 μm					
2044A	5 mm (1 mm)				12 μm			±0-100		
2044A-09										
2045A								0-50-0		

Note: Completed products inspection is performed in the vertical orientation (contact point downward) and the stated accuracy is guaranteed.

Dimensions



Features

Metric							
Code No.							
2046A	✓	—	—	—	✓	—	—
2046A-09	✓	—	—	✓	—	—	—
2047A	—	✓	—	—	✓	—	—
2902A	—	—	✓	—	✓	—	—
2310A-10	✓	—	—	—	—	✓	✓
2044A	✓	—	—	—	✓	—	—
2044A-09	✓	—	—	✓	—	—	—
2045A	—	✓	—	—	✓	—	—

Optional Accessories

Code No.	Description	
21AZB148	Bezel clamp	
21AZB195	Limit hand (2 pcs.)	

Contact points for Mitutoyo's dial indicators refer to pages F-35 to F-38 for details.

Interchangeable backs refer to page F-39 for details.

Plunger lifting aids refer to page F-40 for details.

Measuring stands refer to pages F-67 to F-72 for details.

